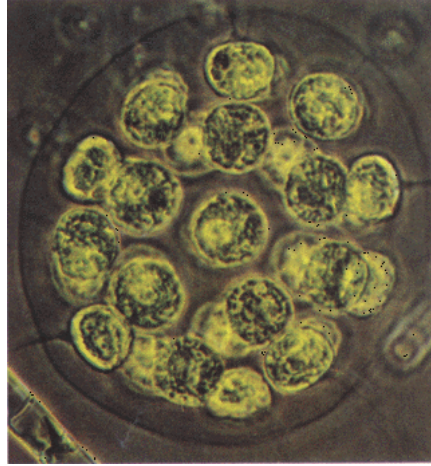


Honors lab Biology summer assignment 2011



Congratulations on your acceptance into the honors biology program here at St. Bernard's. I look forward to working with you in this rigorous, but rewarding class.

Read section 7.3 "Eukaryotic Cell Structure", on pages 179-187 of the biology textbook: Biology – the dynamics of life (2005) by glencoe.

Complete the following assignment. It is due the first day of school. If the homework is not submitted on the first day, for any reason, you will receive a zero for the summer homework.

If you have any questions, please don't hesitate to contact Ms. Feucht by email at: lfeucht@stbernardhs.com

Sincerely,
Ms Feucht

Comparing Plant And Animal Cells

Directions: Complete the chart below, then answer the questions.

Cell Part or Organelle	Is It Found In A Plant Cell?	Is It Found In A Animal Cell?
Cell Membrane		
Cell Wall		
Chloroplast		
Chromatin		
Cytoplasm		
Endoplasmic Reticulum		
Golgi Bodies		
Lysosome		
Mitochondrion		
Nucleus		
Nuclear Membrane		
Nucleolus		
Ribosome		
Vacuole		

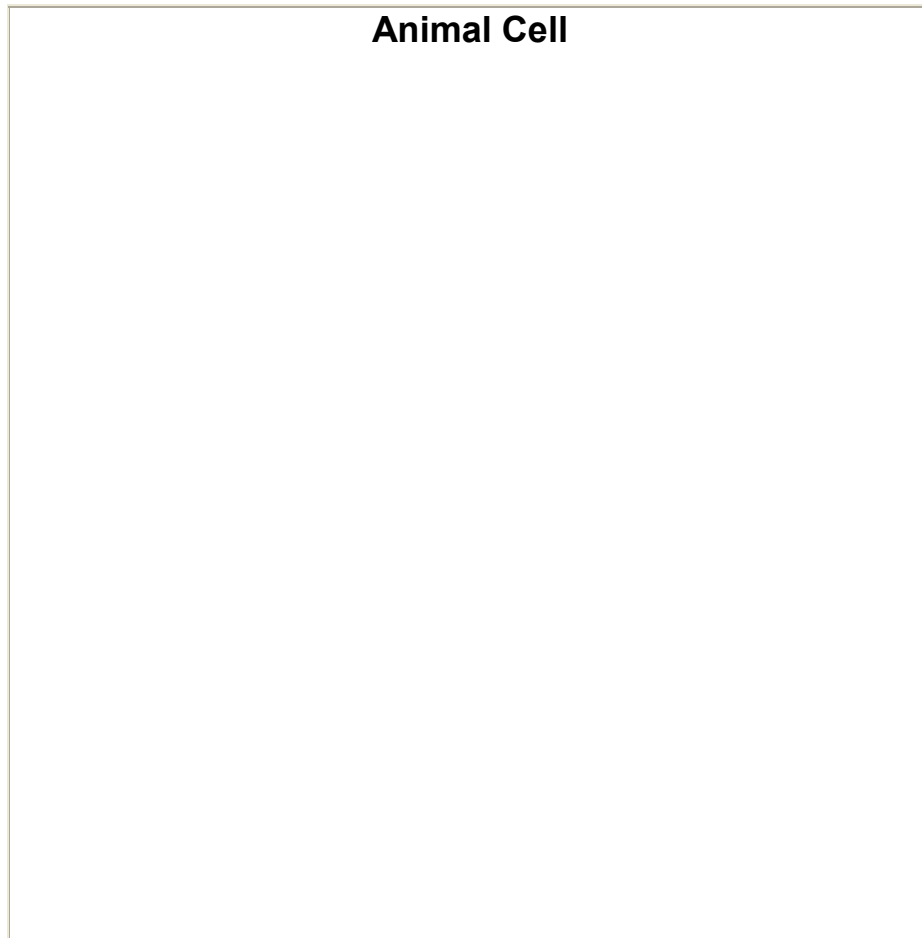
Questions:

1. What cell parts do Animal cells have that Plant cells do not have?
2. What cell parts do Plant cells have that Animal cells do not have?
3. Why do Plant cells have cell walls and Animal cells do not?
4. Why do think Plant cells have bigger vacuoles than Animal cells?

Drawing An Animal Cell

Directions: In the space provided below, draw an animal cell. Make sure to draw and label all of the part listed below. Identify each part by coloring it the color indicated in the word box.

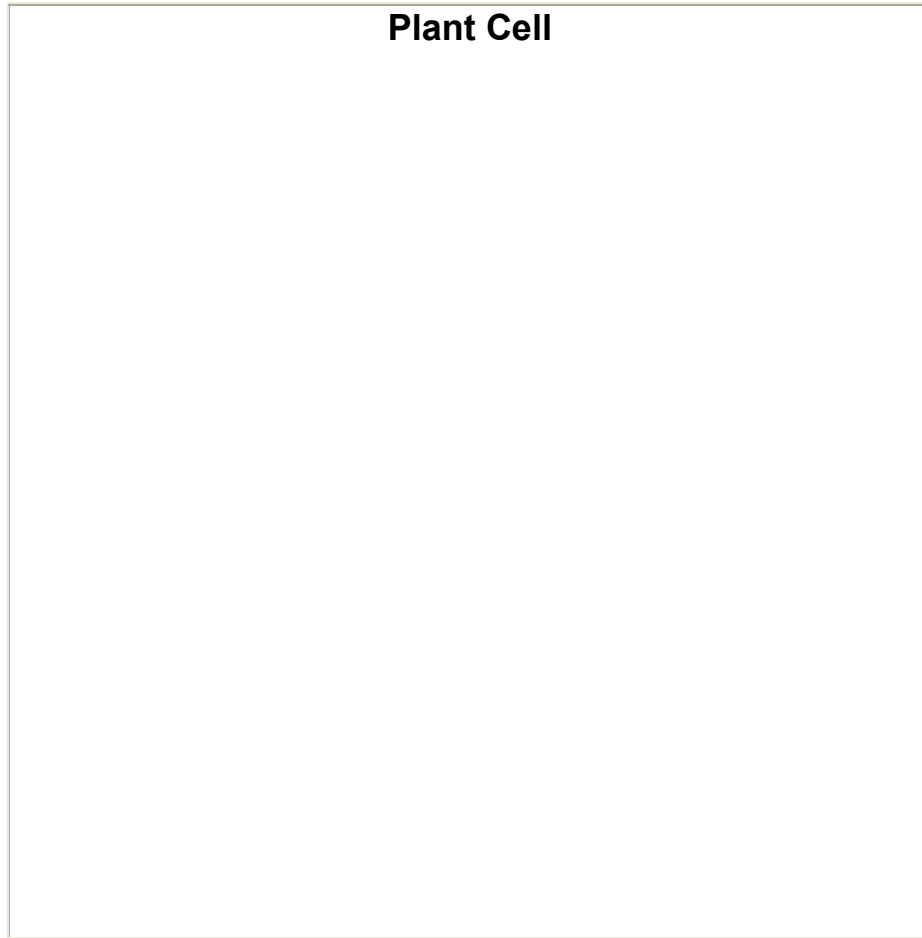
cell membrane (yellow)	nucleolus (blue)	lysosome (green)	cytoplasm (light green)
mitochondria (orange)	nucleus (red)	ribosome (black)	vacuole (brown)



Drawing A Plant Cell

Directions: In the space provided below, draw a plant cell. Make sure to draw and label all of the part listed below. Identify each part by coloring it the color indicated in the word box.

cell membrane (yellow)	cell wall (blue)	chloroplast (green)	cytoplasm (light green)
mitochondria (orange)	nucleus (red)	ribosome (black)	vacuole (brown)



Vocabulary:
Please define each of the following:

Nucleus:

Nucleolus:

Mitochondria:

Endoplasmic Reticulum:

Lysosome:

Golgi Apparatus:

Ribosome:

Vacuole:

Chloroplast:

Cell wall:

Cell membrane: